

# IBA

BioTAGnology

[www.strep-tag.com](http://www.strep-tag.com)

## High capacity

*Strep-Tactin*<sup>®</sup> resin

Get more protein with optimal purity!



**The perfect solution for *Strep-tag*<sup>®</sup> protein purification:**

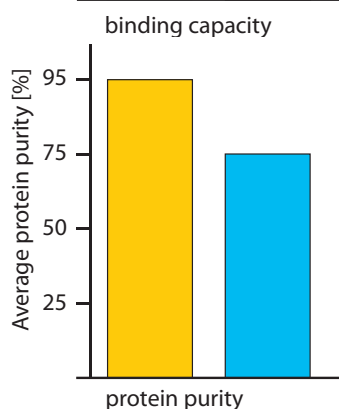
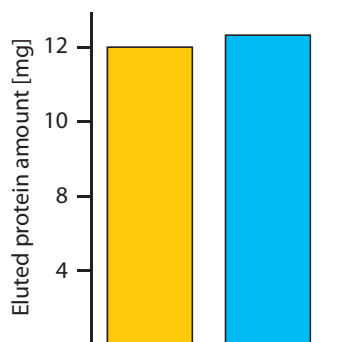
2-3 times more yield as compared to conventional *Strep-Tactin*<sup>®</sup> resins

IBA GmbH, Goettingen, Germany, Tel. +49 551 50672-0, Fax +49 551 50672-181, [info@iba-go.com](mailto:info@iba-go.com)  
IBA US Distribution Center, St. Louis, MO, USA, Tel. 1-877-IBA-GmbH (1-877-422-4624), Fax 1-888-531-6813, [info@iba-go.com](mailto:info@iba-go.com)



Now with IBA web shop!

[www.strep-tag.com](http://www.strep-tag.com)



■ *Strep-Tactin*<sup>®</sup> Superflow<sup>®</sup> high capacity  
■ Ni-NTA Superflow<sup>®</sup>

### Specifications

**Binding capacity:** 1 ml sedimented resin can be used for one-step purification of 150 – 500 nmol recombinant *Strep-tag*<sup>®</sup> fusion protein

**Support:** Superflow 6 (6% agarose, crosslinked)

**Bead size:** 60 – 160 µm, spherical

**Linear flow rate:** 100 – 300 cm/h is recommended for *Strep-tag*<sup>®</sup> purification

**Form (bulk):** 50% suspension in 100 mM Tris/HCl pH 8.0, 150 mM NaCl, 1 mM EDTA

For larger amounts and sets of 5 columns or cartridges please refer to the price list. Please note, that the *Strep-tag*<sup>®</sup> purification system is designed for column affinity chromatography as opposed to batch purification.

\* *Strep-Tactin*<sup>®</sup> Superflow<sup>®</sup> high capacity cartridges H-PR can directly be applied to 10-32 connections of HPLC and GE Healthcare ÄKTA<sup>™</sup>. Adapters for other workstations, syringes, peristaltic pumps as well as to connect several cartridges in series to enlarge capacity are available (see order information).

## Improved binding capacity but identical high protein purity compared to standard *Strep-Tactin*<sup>®</sup> Superflow<sup>®</sup>

### The new IBA affinity chromatography resin for purification of recombinant *Strep-tag*<sup>®</sup> proteins

- provides 2 to 3 times higher binding capacity than standard *Strep-Tactin*<sup>®</sup> Superflow<sup>®</sup> (150 – 500 nmol or 3 – 15 mg recombinant *Strep-tag*<sup>®</sup> fusion protein per ml sedimented resin)
- yields much higher protein purity (> 95%) than 6xHistidine-tag purification on Ni-NTA Superflow<sup>®</sup>
- combines outstanding flow characteristics with superior mechanical stability
- comes in pre-packed *Strep-Tactin*<sup>®</sup> Superflow<sup>®</sup> high capacity columns for gravity flow applications
- or in the new *Strep-Tactin*<sup>®</sup> Superflow<sup>®</sup> high capacity cartridges H-PR\* (“highly pressure-resistant”) for work with automated workstations
- is suitable for increased flow rates and useful for purification of large protein complexes

### Order information

Product	Amount	Cat. no.
Gravity flow <i>Strep-Tactin</i> <sup>®</sup> Superflow <sup>®</sup> high capacity column; 1 ml	1	2-1209-001
Gravity flow <i>Strep-Tactin</i> <sup>®</sup> Superflow <sup>®</sup> high capacity column; 5 ml	1	2-1209-051
Gravity flow <i>Strep-Tactin</i> <sup>®</sup> Superflow <sup>®</sup> high capacity column; 10 ml	1	2-1209-101
Gravity flow <i>Strep-Tactin</i> <sup>®</sup> Superflow <sup>®</sup> high capacity column; 0.2 ml	5	2-1209-550
<i>Strep-Tactin</i> <sup>®</sup> Superflow <sup>®</sup> high capacity cartridge H-PR (with 10-32 connection for HPLC and Äkta <sup>™</sup> ); 1 ml	1	2-1233-001
<i>Strep-Tactin</i> <sup>®</sup> Superflow <sup>®</sup> high capacity cartridge H-PR (with 10-32 connection for HPLC and Äkta <sup>™</sup> ); 5 ml	1	2-1234-001
Syringe adapter set (Luer-lock) for H-PR cartridges	3 sets	2-1021-001
M6 adapter set for H-PR cartridges	1 set	2-1022-001
1/4-28 adapter set for H-PR cartridges	1 set	2-1023-001
1/16 inch adapter set for H-PR cartridges	3 sets	2-1025-001
Coupling adapter set for connecting up to three H-PR cartridges	2 adapters	2-1026-001
<i>Strep-Tactin</i> <sup>®</sup> Superflow <sup>®</sup> high capacity; 50% suspension	4 ml	2-1208-002
<i>Strep-Tactin</i> <sup>®</sup> Superflow <sup>®</sup> high capacity; 50% suspension	20 ml	2-1208-010
<i>Strep-Tactin</i> <sup>®</sup> Superflow <sup>®</sup> high capacity; 50% suspension	50 ml	2-1208-025

*Strep-tag* and *Strep-Tactin* are registered trademarks of IBA GmbH.

Superflow is a registered trademark of Sterogene Bioseparations Inc. ÄKTA is a trademark of GE Healthcare Limited.