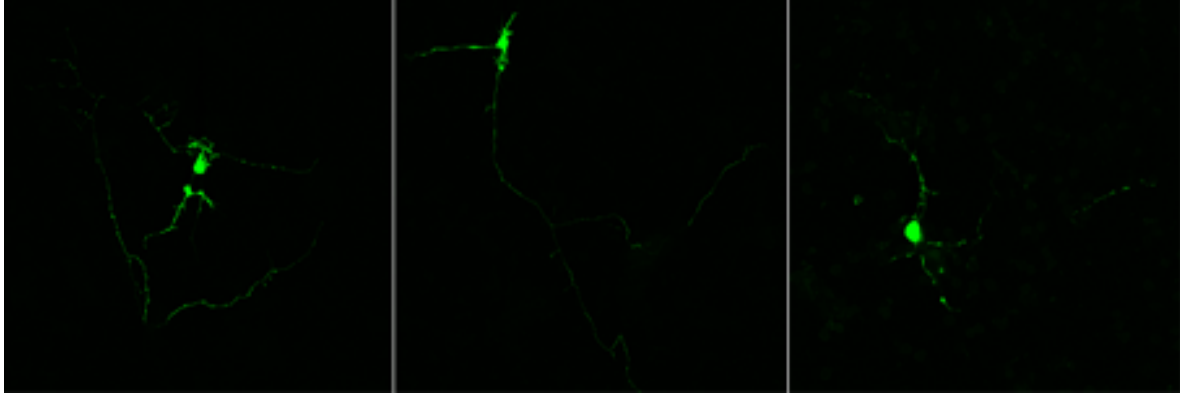
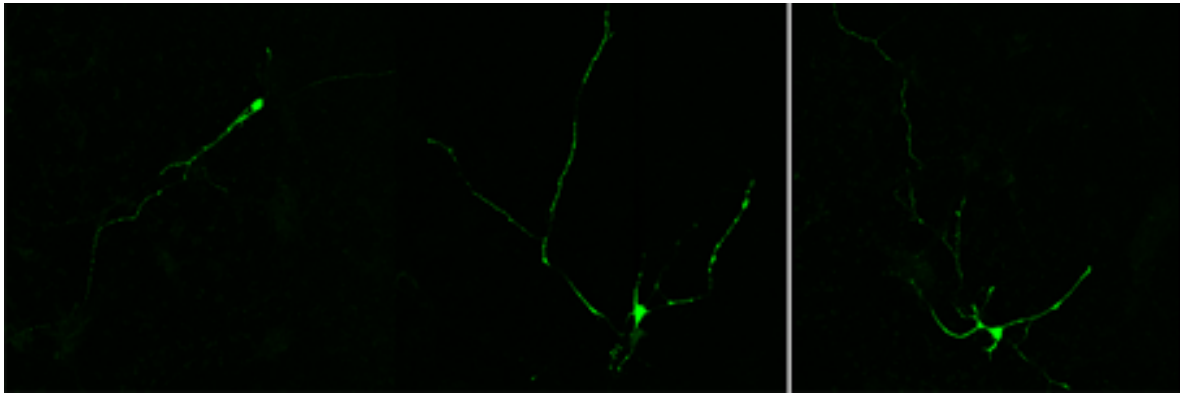


Primary hippocampal neurons transfected with MATra

A

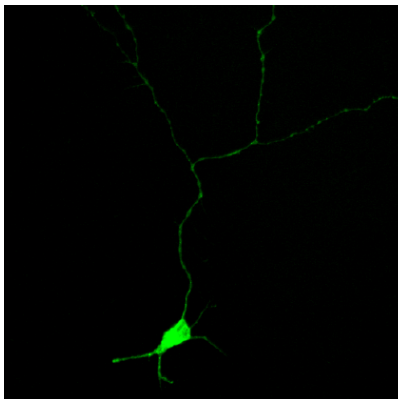


B

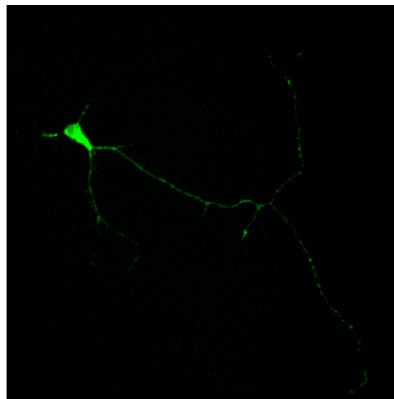


- Primary hippocampal neurons (E14) 100.000 (A) and 150.000 (B) cells/cm²
- transfected with pSyn-eGFP 4 d.i.v. using MATra (25 μ l of MATra A Reagent-DNA complex mixture (2.8 μ g cDNA; 2.8 μ l beads) added to 175 μ l plain medium per cavity)
- cells fixed 6 d.i.v. with 4% PFA

C



12 μ l



25 μ l

- eGFP-coupled ion channel, 6 d.i.v. hippocampal neurons